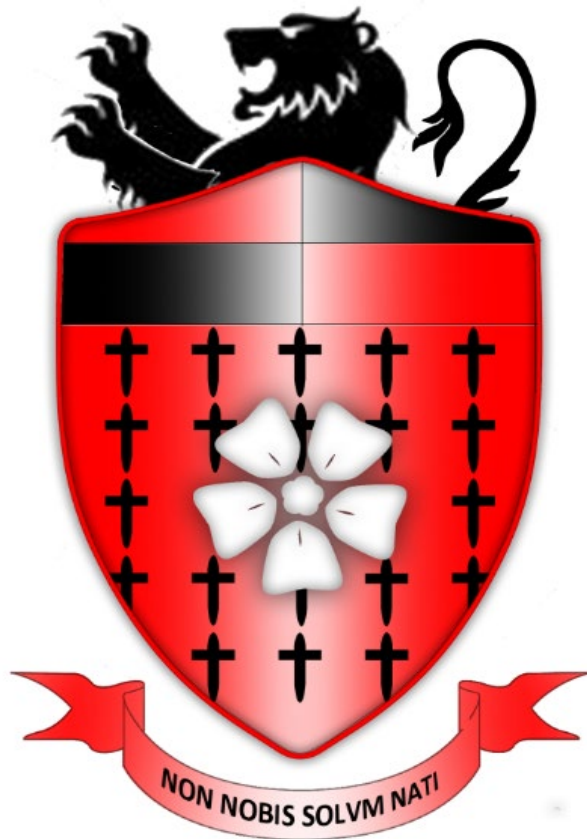


Hornsea School & Language College



Student Uniform Policy Year 7 - 11

Created by:	Gail Smith	
Date Created:	September 2007	
Approved by:	Headteacher: 20.07.22	Governing Body: 20.07.22
Last Reviewed:	Date: August 2022	By: Ashley Dexter
Date of Next Review:	August 2023	

Student Uniform Policy

Rationale and Purposes

The aims of the school uniform policy are to: -

- Promote high standards of behaviour and presentation.
- Support the school ethos of high expectation and achievement.
- Make a clear statement to the community and others about the expectation of our school.
- Promote self-discipline and enhance self-esteem.
- Establish and maintain simple and consistent standards and expectations for students and staff, clarifying student uniform requirements and the approach of school to supporting this on a school wide and pupil by pupil basis

Statutory Position

School Governing Bodies are responsible for deciding whether their school should have a school uniform policy. It is also for the governing body to decide how the uniform should be sourced. The Headteacher's role is to ensure pupils comply with the uniform policy agreed by the governing body.

This uniform policy is a reasonable requirement and does not contravene sex or racial discrimination issues and is not prohibitive in terms of cost. It pays regard to the Sex Discrimination Act 1975, the Human Rights Act 1998 and the Race Relations Amendment Act 2002.

This policy has been developed and updated in line with the requirements of 'School uniform: guidance for schools' DfE (Sept. 2013) and more recently the Education (Guidance about Costs of School Uniforms) Act 2021 (c. 20).

Broad Guidelines

The school uniform code of dress is outlined below – 'School Uniform Requirements'. This gives the list of specific items that constitutes our school uniform and students are required to wear these items when attending school; for set lessons, e.g. PE, Dance; or when required to do so during extra-curricular activities.

Due consideration is given to the cost of items and value for money for parents. In the event of families / students experiencing financial hardship or difficulties in meeting the school uniform expectations, HSLC will work proactively and positively to support any such issues Through the 'Grown Out not Worn Out' programme, school may well be able to help with the provision of various school uniform items. Parents / carers are asked to contact the Student Support Team in confidence to request support, using the email address - support@hslc.co.uk

Sanctions for breaches of uniform expectations are incorporated within the school Positive Discipline system and students can expect an initial Written Warning for Uniform if school expectations are not met. This will be given by the first member of staff to challenge any breach of the uniform code. Pastoral Team staff will follow up on Written Warnings, making contact with home where necessary for repeat warnings or where items of uniform are unsuitable to be worn the subsequent day.

The Headteacher and delegated staff will discipline enforce sanctions under the Positive Discipline system for pupils in breach of uniform policy. Persistent and open defiance of the policy will result in a pupil being unable on a temporary basis to access mainstream classes until the issue is resolved. Where previous sanctions have not led to compliance with the Uniform Policy, or where individual breaches are extreme, the school will send students home to remedy the issue.

The school uniform policy also includes clothing required for physical education and dance. These items are designed to enhance the enjoyment of sport by being safe, comfortable and practical.

The school uniform policy extends to incorporate jewellery, hair colour and piercings (see below).

School Uniform Requirements

The Governors have been pleased to respond to the clearly expressed views of the large majority of parents concerning school uniform. They have approved the following list of clothing as suitable wear in school.

Official HSLC School Uniform Supplier - Steady School Wear

Steady School Wear is HSLC's Uniform supplier. They have a shop on Holderness Road, Hull, which is open 6 days a week. They provide e-mail and telephone advice and support with various delivery options available, as well as access via the Hornsea School tab on their website www.steadyschoolwear.co.uk or by the link on parent/carer tab on the school website www.hslc.co.uk.

Most large retail outlets now stock school uniform that is perfectly adequate and acceptable as long as it is in line with the HSLC uniform expectations detailed below. **However, if parents choose to buy items from other suppliers, please be aware that not all uniform in the 'school section' adheres to our uniform policy. Parents are advised to CHECK THE LIST BELOW before purchasing items.**

Years 7 to 11

Autumn/ Spring term uniform

- Black blazer with school badge - already embroidered blazers and sew-on school badges are available from Steady School Wear.
- Plain white buttoned shirt – this must be worn fully buttoned, including the top button
- Plain black jumper or cardigan to be worn as an additional layer when desired. Cardigans should have buttons, not zips.
- School tie, only available from Steady School Wear
- Black footwear – totally black. If footwear has logos or laces, they should also be black.

- Plain black full-length trousers of regular 'office wear' fabric. Jean material and style, or canvas material, is not permitted. Black leggings are not permitted.
OR
- Plain black skirt of a regular 'office wear' fabric which must fall within 5cm above or below knee length when standing. Tubular style, close fitted or stretch/clingy fabric skirts are not permitted.
- Black socks or tights.
- Coats may be worn. These must be removed and not worn when in classrooms. Hoodies and denim jackets are not permitted items of outerwear.
- Winter hats may be worn. These must be removed and not worn in school buildings.

Summer Uniform:

In summer, students are permitted to replace their white shirt and tie with the following item:

- Red Polo shirt with the embroidered school logo on (only available from Steady School Wear).

- Students who have an 'old-style' fabric red polo shirt with the embroidered school logo may continue to wear these. It is expected that students starting school will purchase the 'new style' version.

All other items of the uniform policy remain the same during the summer term.

PE Kit

All Students:

- Black t-shirts with embroidered school logo (only available from Steady School Wear)
- Black training top with embroidered school logo (only available from Steady School Wear)
- Plain black shorts (these must be long enough to reach the middle of the student's thigh) / tracksuit bottoms / Skorts / leggings (also available from Steady School Wear)
- Red football/ rugby socks (also available from Steady School Wear)
- Trainers
- Football/ rugby boots

Shin pads and mouth guards are highly recommended for invasion games, such as football and rugby. If a student becomes involved in a competition regulated by a National Governing Body for Sport, then the wearing of shin pads and mouth guards may become compulsory.

General

The school blazer must be worn when arriving at school; when moving between lessons; when entering and leaving lessons; and when departing school.

Students will be given permission to remove their blazer during lessons by their teaching staff.

Shirts must be tucked in at all times.

Fashion accessories, e.g. broad, bejewelled or large buckle belts; garments with slogans or logos; and baseball caps are not to be worn. Students will be asked to remove these items and they may be confiscated (for return at the end of the school day).

Make-Up, Hair & Nails

Make-up, if worn, should be kept to a minimum and maintain a natural appearance.

False eyelashes are **not** permitted.

Nails should be of a natural colour and short in length. If false nails are worn, they must keep to these same expectations.

Any students wearing unsuitable make-up, false eyelashes, or with long or brightly coloured nails shall be required to remedy their appearance. All students are expected to comply with a request to do so and failure to do so will lead to sanctions under the Positive Discipline system.

Hair should be of a natural colour and styles should not be extreme or feature shaved patterns.

It may be required of students to tie back long hair in practical activities e.g. in Science, DT, PE or Dance lessons.

Students are expected to comply with these requests to meet the Health & Safety protocols in place. Students who do not follow the direction of teaching staff in these circumstances will be removed from the activity/ lesson and sanctions followed under the Positive Discipline system

Jewellery

The following items are the only items of jewellery permitted:

- A watch

- A pair of single stud earrings

Rings and necklaces are not permitted because of the potential injury risk they pose. Students will be asked to remove any jewellery items that are not permitted and a Written Warning will be given each time a member of staff makes this request of them.

During PE Lessons, all jewellery must be removed. If earrings cannot be removed as they are at the earliest stage of healing, plasters must be worn to cover them.

Piercings

Body piercings are **not** to be worn.
Spacers are **not** to be worn.

Clear plastic alternatives or plasters to cover piercings are **not** acceptable. Students wearing any kind of body piercing will be expected to remove it. All students are expected to comply with a request to do so and failure to do so will lead to sanctions under the Positive Discipline system.

HSLC Response to Uniform Issues

It is hoped that this Policy will clarify uniform expectations and remove any potential for concerns arising or dispute between school and pupil / parents / carers. Please note that:

- School staff are required to check uniform at the start of the day upon arrival at school and in class.
- Pastoral staff will seek to support any issues relating to uniform that are identified, usually at the start of the day.
- A small range of replacement uniform is available for students to borrow (Blazers, Ties, Shoes etc) on a daily basis.
- Pastoral staff will work with individual students to try and establish the reason for uniform issues and how these can be resolved as soon as possible.
- 'One off' incidents, where valid reasons are established will always be supported and communication from parents / carers considered carefully in an attempt to minimise disruption and maintain positive communication.
- If there are any short-term difficulties, please communicate this to the school via the Student Planner and notify the Pastoral Team on pastoral@hslc.co.uk
- In the absence of a valid reason, parental / carer communication explaining difficulties and plans to address these, or pupil refusal to adhere to uniform expectations, it is likely that temporary withdrawal from mainstream classes will result until the matter is resolved and expectations met.
- Within the Positive Discipline structure, persistent refusal to adhere to uniform expectations can result in Isolation until issues are resolved. In a worst case scenario school may need to consider an Exclusion in the face of persistent and deliberate non-compliance with school behavior and uniform expectations – every effort will be made to avoid this.
- The Headteacher or a person authorised by the head teacher, may ask a pupil to go home briefly to remedy a breach of the school's rules on appearance or uniform. When making this decision schools will consider the child's age and vulnerability; the ease and time it will take; and the availability of the child's parents. This is **not** a suspension but an authorised absence. However, if the pupil continues to breach uniform rules in such a way as to be sent home to avoid school, or takes longer than is strictly necessary to effect the change, the pupil's absence may be counted as an unauthorised absence. In either case the pupil's parents will be notified and the absence will be recorded.
- Department for Education guidance cited above states that disputes about school uniforms should be resolved locally and should be pursued in accordance with the school's complaints policy

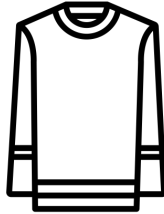
INDEX:

Planner Page from the Student Planner 2022-23

Students Guide to Uniform



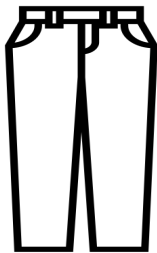
Wear your blazer on arrival, around school, at the start/end of lessons & on departure.



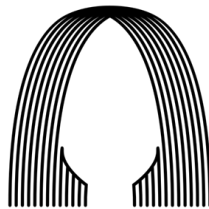
Jumpers & cardigans should be plain black



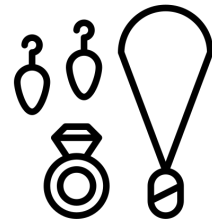
Skirts should sit near the knee and not be stretchy or tubular style



Trousers should be of a smart cloth fabric. No leggings or jeans.



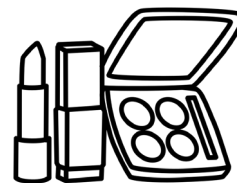
Hair should be of a natural colour. No extreme cuts or styles.



1 pair of stud earrings and 1 watch are the only jewellery or piercing permitted.



Nails should be short and of a natural colour.



Make-up, if worn, must give a natural appearance.